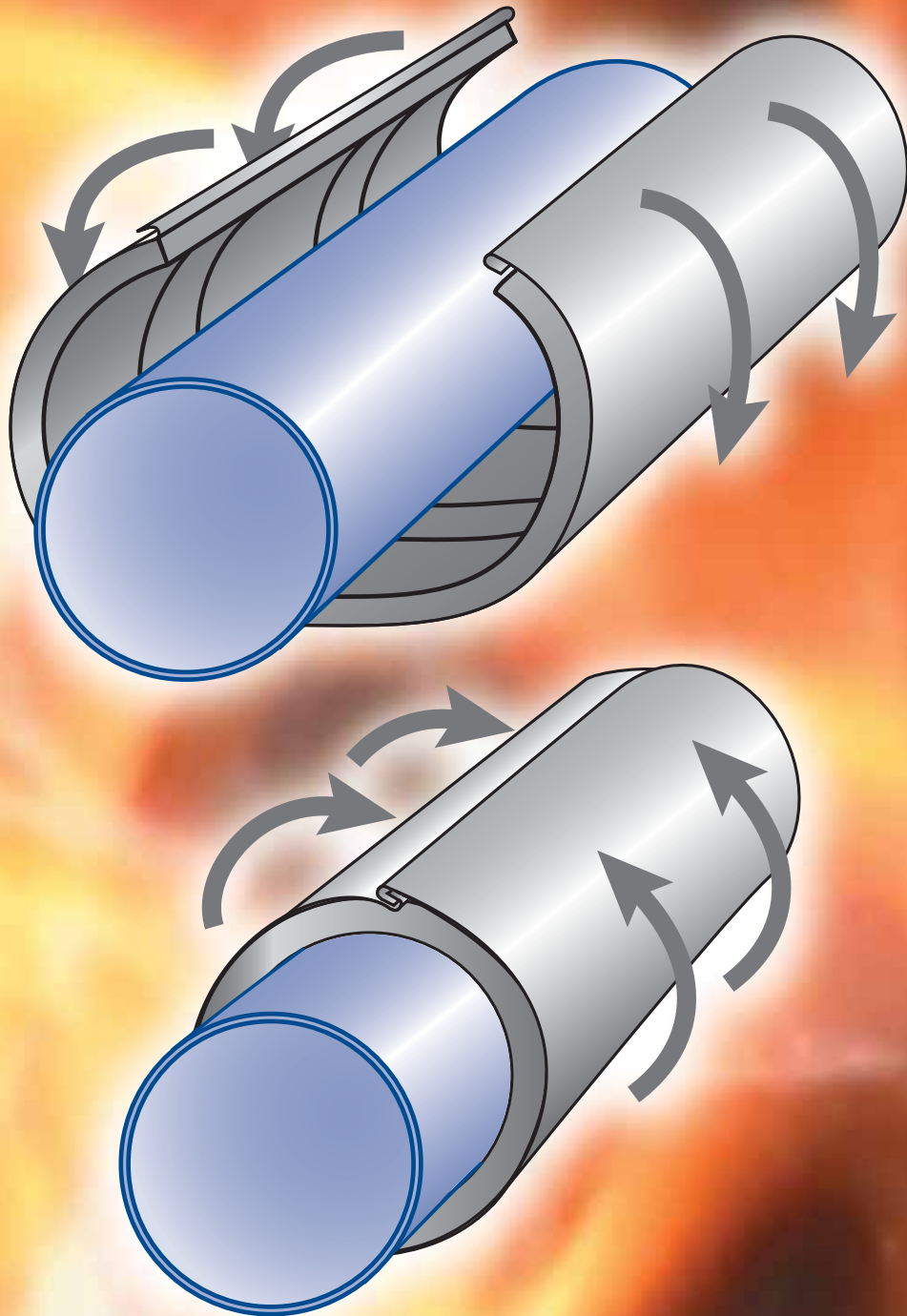


BARNVALE

ENGINEERING & SUPPLY CO

Quality Pipe Support & Steel Fabrication



From A Pipe Clip To A Pipe Bridge

FIRE SLEEVE PIPE WRAP

Two Hour Rated Fire Sleeve Pipe Wrap

Description:

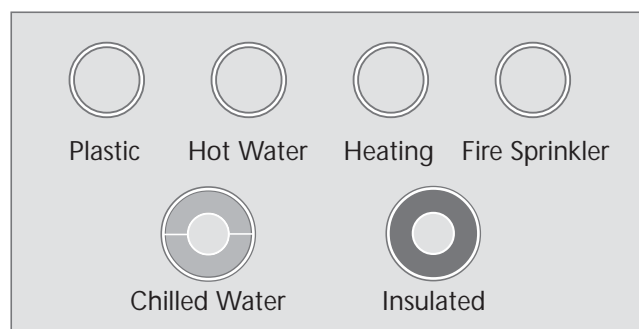
Suitable for fire containment in both plasterboard and block work walls for a two hour fire rated seal, the Fire Sleeve Pipe Wrap is a stainless steel sleeve lined with a high expansion intumescent compound overlaid with a fire resistant acoustic foam compression seal. The intumescent liner and foam are water, moisture and lubricant resistant. The intumescent liner expands when exposed to heat and so provides a fire barrier. When used to seal plastic pipes it will fill the void left by the collapsing pipe.

Applications:

Suitable for sealing both metal and plastic pipes that penetrate a fire rated structure. Due to the high performance of intumescent, which expands up to 50 times its original dimensions whilst creating high pressure, it will close a plastic pipe, which is collapsing due to fire. The sleeve allows movement of the pipe in any direction. Hi-flex version allows greater expansion and movement of the pipe, which may be required to maintain the integrity of the fire barrier such as in a fire rated plasterboard partition.

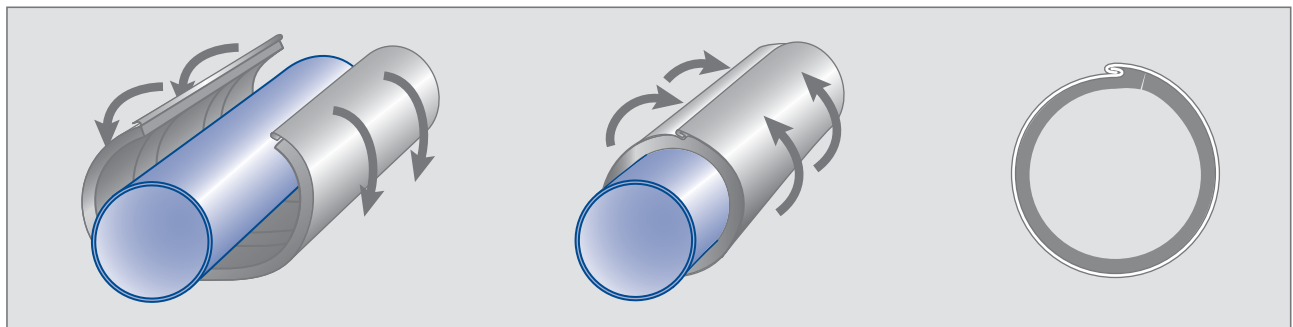
Benefits:

- Easy to fit 'Snap-Lock' action saves fitting time
- Unaffected by water, moisture or lubricants
- Up to 2 hours of fire resistance rating
- Highly flexible
- Available in a range of pipe sizes
- Maintenance free
- Acoustic rated foam forms a cold smoke seal
- Lightweight



Installation:

Compress one side of the seal between the fingers and place over the pipe. Ensure the sleeve covers the pipe and the edges are sealed utilizing the 'Snaplock' seal. Ensure the edge of the sleeve is flush with the face of the wall.



The Fire Sleeve Pipe Wrap is to be made good around its shell using our Co-Polymer Sealant which is also fire rated for two hours.

IMPORTANT NOTICE: DO **NOT** REDUCE THE LENGTH OF THE SLEEVE.

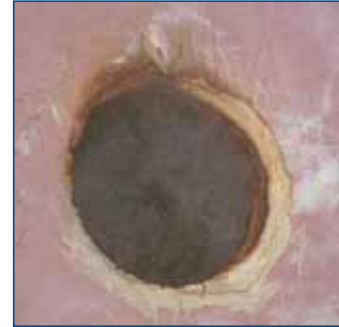
Product Data – Intumescent liner

- Description: a flexible graphite impregnated compound
- Density: approx. 1.3g/cm³
- Colour: black
- Expansion start temperature: approx. 200°C
- Total expansion volume: > 50 fold
- Pressure: approx. 0.9 N/mm²

Two Hour Rated Fire Sleeve Pipe Wrap

Expansion / Temperature Ratio

Temperature	Depth of seal	Expansion
Ambient	1mm	
150°C	1mm	
170°C	2.1mm	2
200°C	4.0mm	4
250°C	12.7mm	12
300°C	28mm	28
450°C	42.3mm	42
600°C	51.7mm	52
800°C	56mm	56



220mm Penetration

Product Data – Compression seal

- Density (Kgm³) Minimum 75
- FMVSS 302 Self Extinguishing
- BS 4753 Char Length 4-5mm
- Wicking None
- Dripping None
- Oxygene 41

Limitations of use:

Not to be used against sub straights that bleed oils, plasticisers or solvents.
Tested following the principals of BS 476 Part 20.

Packaging:

Pipe Sleeves are manufactured in 205mm lengths. Individually packed.

Colour:

Stainless Steel.

Storage:

Store in frost free, dry conditions below 30°C.

Health & Safety:

The Fire Sleeve Pipe Wrap presents no hazard to health during installation.

Test Data:

The fire test was carried out to BS 476 part 20 at the Chiltern Fire Test Centre. The test was based upon pipe diameters up to and including 400mm in both Block Work Wall and Plasterboard partitions. The test was carried out up to 1100°C for over two hours.

The Fire Sleeve Pipe Wrap closed up holes in partitions where pipework passed and maintained integrity for the full two hours with a temperature of 1100°C at 10 bar pressure.



BARNVALE FULL PRODUCT RANGE



Intumescent Acrylic Mastic

- Flexible water based Intumescent gap sealant
- Excellent adhesion
- Offers long term flexibility
- Up to 4 hours fire resistance



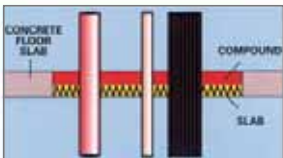
Fire Collars

- Intumescent filled metal collars designed to prevent passage of fire and toxic fumes through plastic pipe-work in walls and floors
- Resistant to moisture and humidity
- Up to 4 hours fire resistance



Fire Wraps

- Intumescent expanding fillers encased in plastic sleeve which has self adhesive strip for easy installation
- Used for uPVC pipes penetrating concrete floor and masonry / block work walls
- Up to 4 hours fire resistance



Compound

- Fire-rated mix of various gypsum powders, designed to seal compartment floor and wall service penetrations
- Quick curing, easy to install, non-shrinking
- Up to 6 hours fire resistance



Rigid Fire Barriers

- High density mineral fibre batts coated with fire resistant coating
- Light-weight method for filling large compartment holes in fire-rated wall penetrations
- Up to 4 hours fire resistance



Firestop Pillows

- Flexible fibre-glass outer pillows filled with non-combustible bulking agents, intumescent expansion product and other fillers
- Used normally as temporary cable-tray firestops
- Up to 4 hours resistance



Fire-rated Foam

- Expands up to 40 times its original volume
- Coloured pink for identification as fire-rated product
- Used for filling irregular holes, gaps and service penetrations
- Up to 2 hours fire resistance

BARNVALE ENGINEERING & SUPPLY CO

Quality Pipe Support & Steel Fabrication

14 Creekmouth Industrial Estate, 57 River Road, Barking, Essex. IG11 0DA

Telephone: 020 8591 9588 Facsimile: 020 8591 9540

e-mail: sales@barnvale.co.uk website: www.barnvale.co.uk