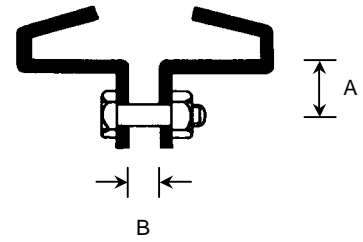


# Beam Clamp

B 048

Ref.	A	B	Bolt Dia.	Material
1	40	12	m10	30 x 5
2	45	14	m12	40 x 5
3	50	18	m16	50 x 8
4	60	22	m20	60 x 8
5	70	22	m20	70 x 10
6	80	26	m24	80 x 12

Please specify beam dimension when ordering  
Standard Finish Red Oxide

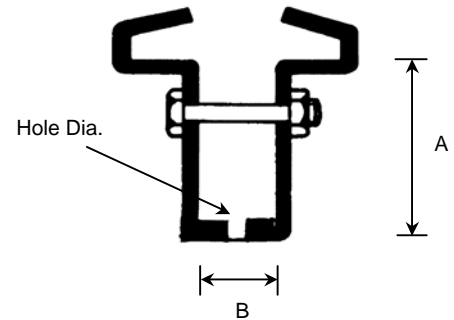


# Beam Clamp

B 049

Ref.	A	B	Hole Dia.	Material
1	100	50	13	30 x 5
2	100	50	15	40 x 5
3	100	50	19	50 x 8
4	100	60	23	60 x 8
5	100	60	23	70 x 10
6	100	60	27	80 x 12

Please specify beam dimension when ordering  
Standard Finish Red Oxide

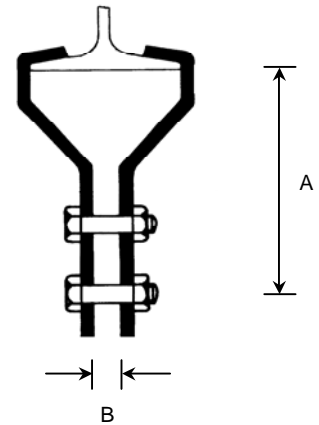


# Beam Clamp

B 050

Ref.	A	B	Bolt Dia.	Material
1	175	18	m16	70 x 10
2	200	18	m16	70 x 10
3	200	22	m20	80 x 12
4	250	22	m20	80 x 12
5	250	26	m24	100 x 15
6	300	26	m24	100 x 15

Please specify beam dimension when ordering  
Standard Finish Red Oxide



# Beam Clamp

B 051

Ref.	A	B	Hole Dia.	Material
1	155	75	15	50 x 8
2	155	75	19	50 x 10
3	155	75	23	70 x 10
4	155	75	27	80 x 12

Please specify beam dimension when ordering  
Standard Finish Red Oxide

