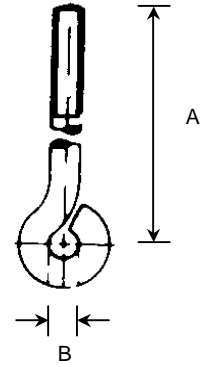


Eye Bolt Open & Welded Eye

B 034

Thread Size	B	A	A	A	A	A
m6	10	80	150	200	250	300
m8	12	80	150	200	250	300
m10	14	80	150	200	250	300
m12	18	80	150	200	250	300
m16	21		150	200	250	300
m20	25		150	200	250	300
m24	30		150	200	250	300

Standard Finish Zinc Plated



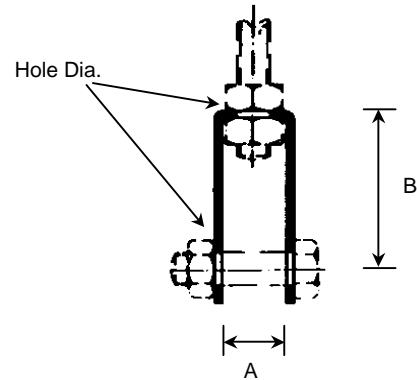
Link Eye

B 035

Ref.	A	B	Hole Dia.	Material
1	12	45	8	25 x 1.5
2	20	45	13	30 x 1.5
3	20	45	13	30 x 1.5
4	30	55	19	50 x 3

Standard Finish Pre-Galvanized Material Ref: 1, 2 & 3

Standard Finish Red Oxide Ref: 4

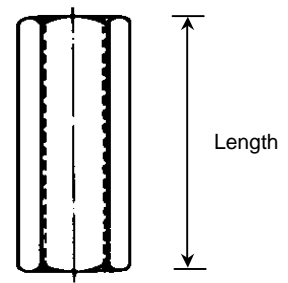


Connector

B 036

Dia.	Length
m6	20
m8	24
m10	30
m12	40
m16	50
m20	60
m24	75

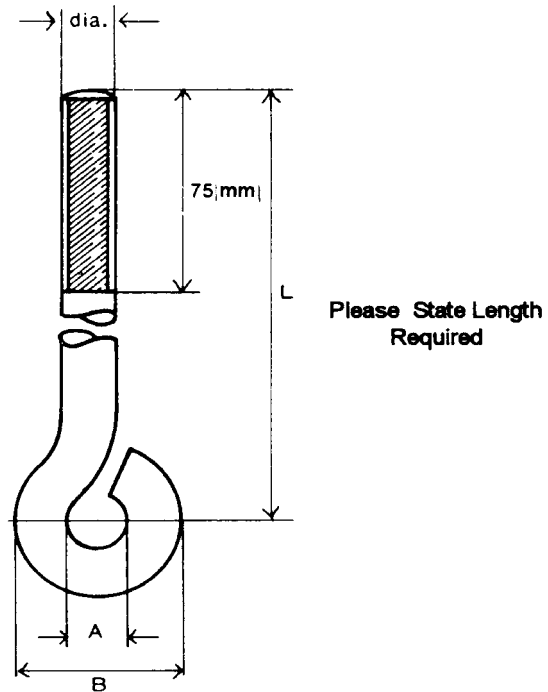
Standard Finish Zinc Plated



Eye Bolt With Hot Formed Eye

BS 3974: Part1: 1974

B 100



Sling Rod Dia.	A	B	Safe Working Load
mm	mm	mm	Kgf
8	10	26	70
10	12	32	105
12	15	39	150
16	19	51	285
20	24	64	430
24	28	76	660

Standard Finish Red Oxide

Note:

The safe working loads in the above table are those applicable to an open eye.

The use of welding to close the eye is not acceptable.