

Girder Clamp

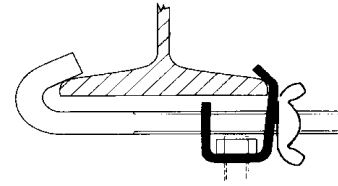
B 044

Please specify beam dimension when ordering

Material 25mm x 5mm Flat

10mm Hook Bolt

Standard Finish Zinc Plated



Girder Clamp

B 045

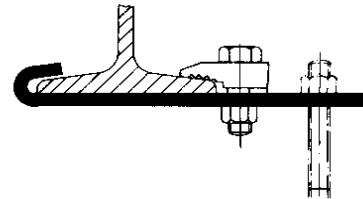
Please specify beam dimension when ordering

Material 50mm x 6mm Flat

Steelwork Fixing Included

Not suitable for loads requiring a drop rod greater than m12

Standard Finish Red Oxide



Girder Clamp

B 046

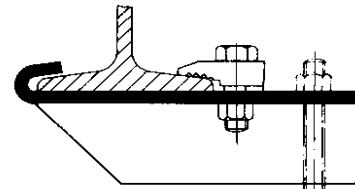
Please specify beam dimension when ordering

Material 50mm x 50mm x 6mm or 70mm x 70mm x 6mm Angle

Steelwork Fixing Included

Not suitable for loads requiring a drop rod greater than m16

Standard Finish Red Oxide



Girder Clamp

B 047

Please specify beam dimension when ordering

Material 50mm x 50mm x 6mm or 70mm x 70mm x 6mm Angle

Steelwork Fixings Included

Not suitable for loads requiring a drop rod greater than m16

Standard Finish Red Oxide

