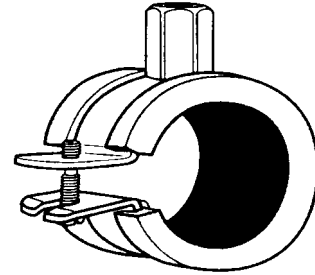


Nominal Pipe Size			Tube Range	Boss Size	S.W.L.
Imperial	Metric	Copper			
		15	13 - 15	m8 / m10	60 Kg
1/2	15	22	20 - 22	m8 / m10	60 Kg
3/4	20	28	25 - 28	m8 / m10	60 Kg
1	25	35	33 - 35	m8 / m10	60 Kg
1 1/4	32	42	42 - 44	m8 / m10	60 Kg
		54	52 - 55	m8 / m10	60 Kg

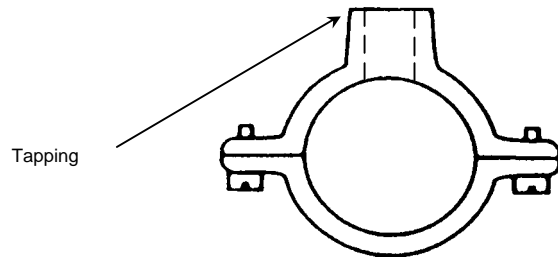
Standard Finish Zinc Plated



Munsen Ring Single (Malleable Iron)

Nominal Pipe Size		Tapping
Imperial	Metric	
1/2	15	m10
3/4	20	m10
1	25	m10
1 1/4	32	m10
1 1/2	40	m10
2	50	m10
2 1/2	65	m10

Standard Finish Self Colour Or Galvanized



Munsen Ring Double (Malleable Iron)

Nominal Pipe Size		Tapping
Imperial	Metric	
1/2	15	m10
3/4	20	m10
1	25	m10
1 1/4	32	m10
1 1/2	40	m10
2	50	m10
2 1/2	65	m10

Standard Finish Self Colour Or Galvanized

